



**ONE LOVE LOUISVILLE**  
**YOUTH EDITION**  
OCTOBER 2015



# ONE LOVE LOUISVILLE YOUTH EDITION

CREATING SAFE AND HEALTHY NEIGHBORHOODS FOR LOUISVILLE'S YOUTH



## ABSTRACT

Lead by Louisville's Mayor Greg Fischer and his Office for Safe and Healthy Neighborhoods, this plan puts forth 5 goals aimed at reducing youth involvement, exposure and impact of homicides, shootings, and aggravated assaults using the balanced and coordinated PIER (Prevention, Intervention, Enforcement and Re-Entry) approach. The Center for Disease Control's Public Health Approach to youth violence is utilized and thus the goals focus on increasing positive outcomes and coordinating efforts in 5 systemic areas-community building, education, employment and economic development, health and social wellness and juvenile and criminal justice.

**Greg Fischer**, Louisville Mayor

**Sadiqa Reynolds**, Chief of Community Building

**Anthony Smith**, Director for Safe and Healthy Neighborhoods

**Quaniqua Carthan**, Coordinator for Safe and Healthy Neighborhoods



## CONTENTS

3 LETTER OF SUPPORT

5-7 OVERVIEW

8 LOUISVILLE ASSETS

10-11 VISION FOR LOUISVILLE YOUTH  
GUIDING PRINCIPLES

12 DEFINING VIOLENCE

13-14 STATE OF LOUISVILLE YOUTH

15-23 GOALS, OBJECTIVES & ACTIVITIES

24-25 ROLES OF POLICY & FUNDING

26-28 IMPLEMENTATION PROCESS &  
GOVERNING STRUCTURE

29-31 TIMELINE

32-38 APPENDIX





Greetings All,

We are working hard every day to create many pathways to make sure all youth are secure, supported and prepared for lifelong success. To reach this goal - we know that we have to work across all sectors and must youth at the table helping to inform our efforts.

This new action plan is part of the city's "One Love Louisville" campaign and is focused on preventing violence that most impact our youth 24 and under - homicides, shootings and assaults. We know are youth are exposed to many forms of violence and it can create negative outcomes for them - so our work will focus on developing prevention and intervention strategies, knowing that we much work with law enforcement and create opportunities for youth to reenter if they get off track.

Using the National Forum on Youth Violence Prevention framework - we identified five goals and 13 objective to help us reduce the violence that impact our youth. These five goals take a holistic approach to preventing youth violence:

- ▶ Create and promote opportunities for civic engagement
- ▶ Improve conditions that hinder education attainment
- ▶ Support economic growth with a focus on the most economically challenged neighborhoods
- ▶ Enhance the quality of intervention with individuals and families at the first sign of risk
- ▶ Promote a restorative justice community

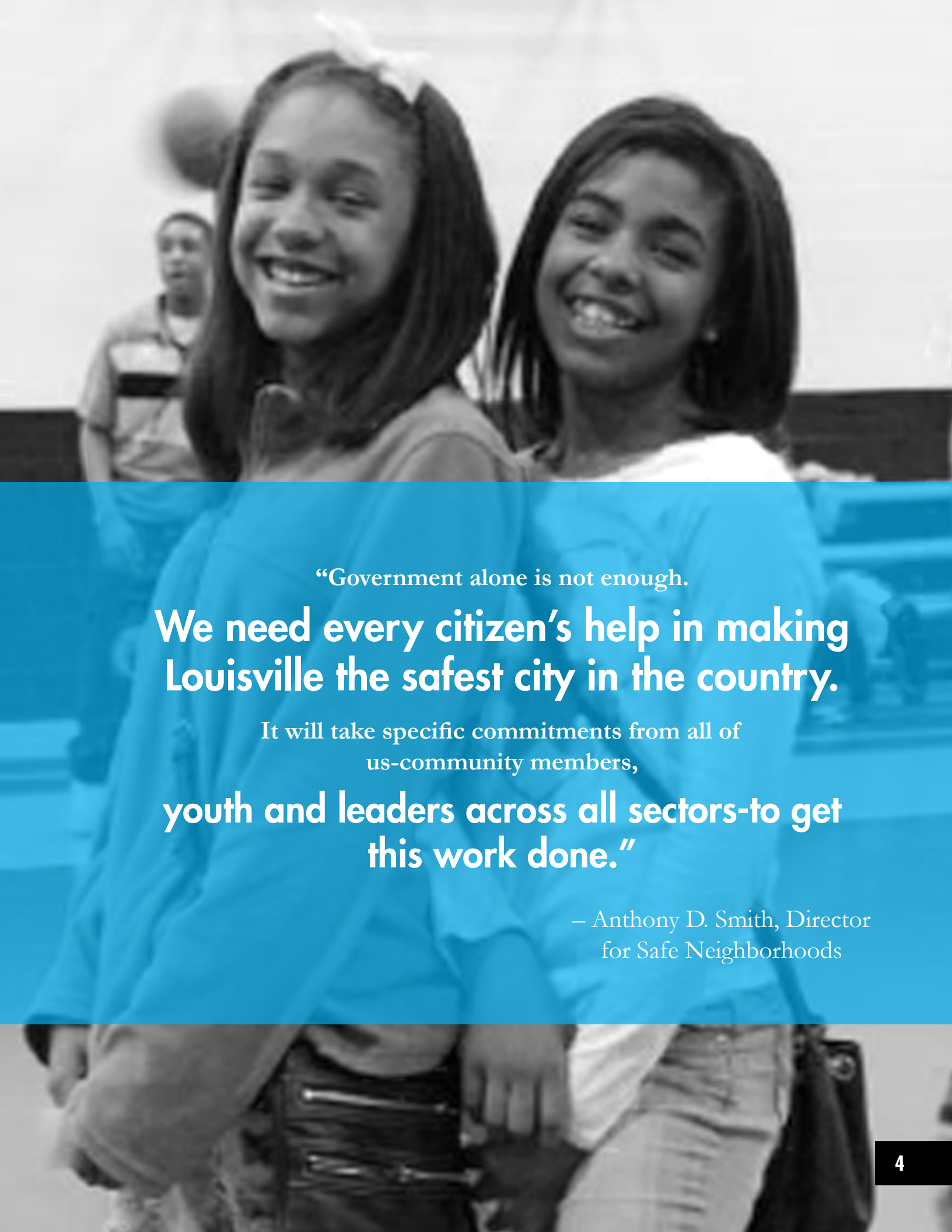
As you read this action plan, you will see that we are committed to holding ourselves and others accountable to the desired outcomes we all have for our youth. We will look policies, programs and practices and make the necessary adjustments – but more importantly we will work shoulder to shoulder with our youth to make sure we all live in the safest city in the nation.

Sincerely,

**Greg Fischer**, Mayor

**Donna M. Hargens**, Ed.D., Superintendent

**Steve Conrad**, Chief



“Government alone is not enough.

**We need every citizen’s help in making  
Louisville the safest city in the country.**

It will take specific commitments from all of  
us-community members,

**youth and leaders across all sectors-to get  
this work done.”**

– Anthony D. Smith, Director  
for Safe Neighborhoods



**VISION:** A city of safe neighborhoods where all citizens feel secure supported and prepared for lifelong success.

**OBJECTIVES:** 1) Reduce the number of violent deaths experienced by young adults and decrease the number of youth exposed to violence.  
2) Reduce homicide, shooting, suicide and overdose rates throughout the city of Louisville

**PLANNING & IMPLEMENTATION:** Utilizing the CDC's Public Health Approach to Violence Prevention, the OSHN works alongside neighborhood residents and community, faith-based, corporate and government partners in a community effort to prevent violence, intervene accurately, enforce justly and effectively, and provide opportunity for those returning from incarceration or detention.

## Overview

In Louisville, Kentucky on May 17, 2012, three young African Americans were killed at 32nd and Greenwood Streets, in two separate shooting incidents, with one occurring during the investigation of the other. In response to this tragic event, Mayor Greg Fischer proposed the formation of a violence prevention work group to accelerate the work initiated earlier that year and engage the community in the development of short- and long-term violence reduction strategies for Louisville. On October 25, 2012 the group presented its report, *Strategies to Prevent Violence in Louisville Metro: Short- and Long-Term Recommendations*, with a primary recommendation for Mayor Fischer to hire a full-time person to mobilize into action the remaining recommendations. The Office for Safe and Healthy Neighborhoods (OSHN) officially opened in March 2013 with the hiring of its full time director .

Under the leadership of the new, founding director, the OSHN has moved Louisville to action by working with a diverse group of citizens to draft community-wide strategies and a community-wide violence prevention campaign. The first plan, *Phase One: Moving Louisville to Action-Louisville's Blueprint for Safe and Healthy Neighborhoods* outlined the beginning stages for how the office would move forward with creating a strategic community plan. The current strategy, *Louisville's Blueprint for Safe and Healthy Neighborhoods Phase II-One Love Louisville: Be the One to Make a Difference* (in short



## ONE LOVE LOUISVILLE

called One Love Louisville), comprehensively presents the methods for reducing violent deaths and injuries caused by homicides, suicides, overdoses, shootings and assaults. One Love Louisville consists of 1) Community Plan that has 13 goals and 42 initiatives, 2) a My Brother's Keeper Plan that focuses specifically on increasing positive outcomes for African American men and boys by reaching six milestones and 3) the current document, a Youth Edition which deploys efforts to decreasing violence directed to and involving individuals under the age of 24. The One Love Louisville campaign and strategies are a result of months of hard work and dedication by 150 citizens .

One Love Louisville-Youth Edition serves as an addition to the strategic plan currently in progress and will focus on increasing positive outcomes for youth (0 to 24 years of age) who reside in Louisville Metro Police Department (LMPD) divisions 1, 2, and 4. Local data illustrates that young adults (ages 18-30 years) lose their lives as a result of homicide more often than any other age group. If efforts are focused on youth 24 years of age and under, there's potential to reduce the number of youth who are exposed to violence, become victims of violence, or perpetuate violence. The following sections will discuss the vision for Louisville youth, the social and physical environment of Louisville youth, and the solutions and goals that will enhance the positive outcomes as well as counteract the ills that impact Louisville youth.

A community-wide campaign that focuses on encouraging all citizens to flex their citizenship muscle by being the 'One to Make a Difference' through active engagement in neighborhood, community and city level activities that aim to improve outcomes for individuals, families and communities. The purpose of One Love Louisville is to reduce the following forms of violence: homicide, suicide, overdose deaths, shootings and assaults with an emphasis on disconnected neighborhoods.

# OPERATIONAL DEFINITIONS

Youth: persons 0-24 years of age

Targeted Areas: Louisville Metro Police Divisions: 1, 2, & 4

Youth Violence: Homicide, Shooting, Aggravated Assault, & Suicide

Violence Prevention: creating safe and healthy neighborhood through Prevention, Intervention, Enforcement and Re-Entry

Disconnected Neighborhoods: areas that systemically experience low levels of education attainment, high unemployment rates, low city-level civic engagement and/or rates of crime





# LOUISVILLE ASSETS

Louisville will be a city of safe neighborhoods, where all citizens feel secure, supported and fully prepared for lifelong success by utilizing its following assets...

## STRONG NEIGHBORHOODS

“Place Matters. Quality neighborhoods are invaluable in helping people, especially children, feel safe, valued, and supported. Having and living with these feelings leads to emotionally healthy, compassionate, and purposeful citizens.”

-Gwendolyn Kelly  
Curious Citizen

## INNOVATIVE SCHOOL-SYSTEM

“Current achievement data at our alternative schools is not acceptable. That is not to say individual students have not been successful. We believe in these students and know that collectively they can do better. This is about creating improved opportunities for every student in Jefferson County, including about alternative school students. “

-Donna Hargens  
Jefferson County Public Schools Superintendent

## ENGAGED FAITH-BASED COMMUNITY

“What if the church on every corner had its people come out from within their four walls and be engaged in the community God has them strategically planted them in?”

-Chad Rehnberg  
Minister of Community Engagement  
New Breed Church

## COMPASSIONATE GOVERNMENT

“...a compassionate government is one that provides a platform for human flourishing...the leaders of a compassionate government work together... A compassionate government... holds itself and their citizens accountable... invite everyone to the table...and put people, place and planet before party”

-Tom Williams  
Co-host, the Partnership for a Compassionate Louisville

## ROBUST NON-PROFIT COMMUNITY

“Louisville has a remarkably vibrant nonprofit community with many organizations doing exceptionally good work in partnership with the young people they serve.

-Kevin Connelly  
CEO at Center for Nonprofit Excellence



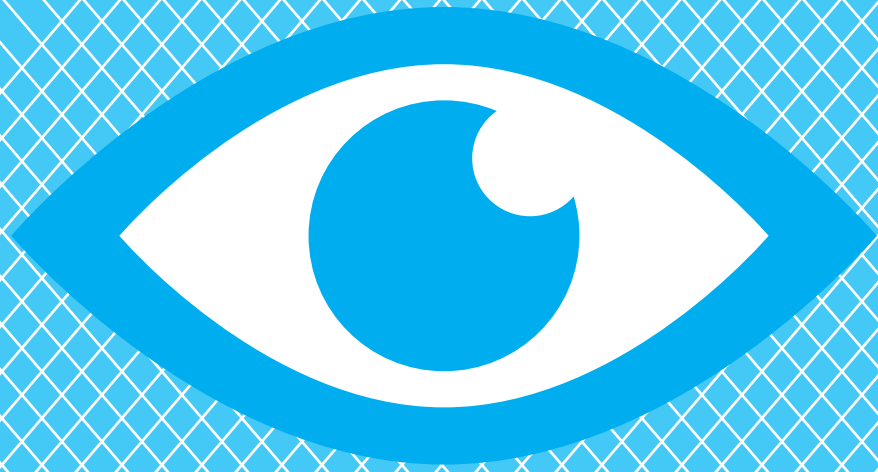
**STRONG NEIGHBORHOODS**

**COMPASSIONATE GOVERNMENT**

**INNOVATIVE SCHOOL-SYSTEM**

**ROBUST NON-PROFIT COMMUNITY**

**ENGAGED FAITH-BASED COMMUNITY**



# VISION FOR LOUISVILLE YOUTH

## *LOUISVILLE YOUTH . . .*

**HAVE** the skills and education to be self-reliant, healthy, engaged and economically thriving.

**HAVE** hope and show strength of character to achieve their goals, follow their dreams, respect others, and contribute to bettering their community and world.

**LIVE** in a caring community where everyone values, supports, invests in and fights for their success.

# PRINCIPLES

OUR WORK IS GROUNDED IN THE FOLLOWING PRINCIPLES:

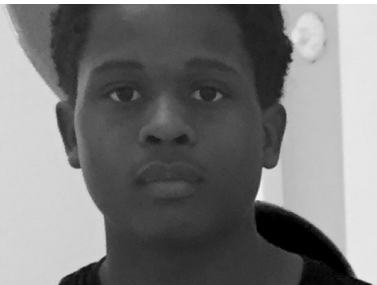
## EMPHASIS ON EFFECTIVENESS & EFFICIENCY

We can reduce violence by increasing and systematizing coordination and collaboration by forging new partnerships and combining resources



## RESULTS ORIENTATION

We commit to common results and indicators for the city as a whole and development of a schedule and method to track progress



## TARGET RESOURCES

Resources will be found to fund OSHN projects and they will be directed to areas most impacted by violence



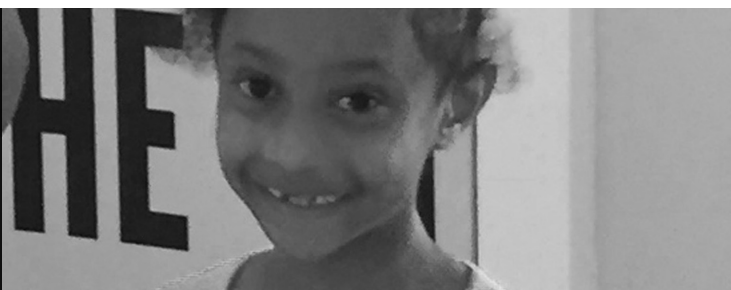
## REPRESENTATION

Everyone will have a role and a voice—increase resident and neighborhood engagement and build positive connections



## ENGAGE LEADERSHIP

Champions from all of Louisville's communities will be called to participate, influence and impact the work



## BALANCE

We utilize an approach that balances personal accountability and mutual assistance -neighbor to neighbor, parent to child, government to resident, youth to community, community and faith-based organization to member





# DEFINING VIOLENCE

The Office for Safe and Healthy Neighborhoods has come to understand youth violence in our city using....

- 1) Louisville youth perspective,
- 2) the World Health Organization's definition , and lastly,
- 3) local police department statistics.



**Violence is when an individual or group intentionally causes harm to oneself or to others**

- Louisville Youth

## **The World Health Organization's definition of violence is as follows:**

"the intentional use of physical force or power, threatened or actual, against oneself, another person, or against a group or community, that either results in or has a high likelihood of resulting in injury, death, psychological harm, maldevelopment, or deprivation."

Local police department data illustrated that youth experienced the following types of violent crimes at higher rates than other violent crime:

- ▶ Homicide
- ▶ Shooting
- ▶ Aggravated Assault
- ▶ Suicide
- ▶ Drug Activity

# SNAPSHOT OF LOUISVILLE YOUTH

## Making the Case

Nineteen data indicators from January 2012 thru December 2014 (unless otherwise noted) have been identified based on the desired goals and outcomes of the One Love Louisville Youth Edition action plan. The following indicators of a safe and healthy environment provide a snapshot of the setting in which Louisville youth (0-24yrs) reside, play, and attend school and/or work. Research illustrates that these indicators, when improved, will help communities such as Louisville move towards a less violent city for all individuals, families and neighborhoods. Baselines and targets have yet to be identified and the Office for Safe and Healthy Neighborhoods and its partners will frequently provide updated snapshots of the nineteen identified indicators while identifying baselines and targets. While the goals and objectives are focused on the geographic areas most impacted by violence, the supporting data is concentrated on the entire city. For sources, please see footnotes at the bottom of the page.

## YOUTH DEMOGRAPHICS

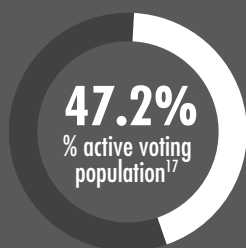
**197,382 Youth**  
est. # of youth (0-24yrs of age)

**9,100**  
est. # of Opportunity Youth



## PROTECTIVE INDICATORS

The following three indicators have been identified to highly exist in strong communities with low rates of violence



**700 Mentor Opportunities**  
# of open slots within multiple agencies<sup>18</sup>  
**929 Houses of Faith**  
Approx. # houses of faith signed up in Mayor's Faith Forum



**COMMUNITY SAFETY** All One Love Louisville goals and objectives work to impact the following 6 **COMMUNITY SAFETY** indicators.

**+ 307** Injured from shootings  
Avg. # of shootings: 102/yr.<sup>2</sup>

**+ 2,253** Injured from Assault  
Avg. # of Aggravated Assault: 751/yr.<sup>3</sup>



**53** Homicide Related Deaths  
Avg. # of Homicide Related Death: 18/yr.<sup>1</sup>

**10,506** Drug/Narcotic Violations  
Avg. # of Drug/Narcotic Violations cited: 3, 502/yr.<sup>4</sup>



**52,990** Children involved in Child Abuse/Neglect Cases

Avg. # of KY Children Involved in Substantiated Child Abuse/Neglect Cases: 17, 663/yr.<sup>5</sup>

**996** Children Exposed to Violence

(March 2014-Feb. 2015)<sup>6</sup>

**EMPLOYMENT/ECONOMIC DEVELOPMENT**

**62.9%** of Students received free/reduced lunch

% youth enrolled in public school receiving free/reduced lunch (2012-2014)<sup>14</sup>

**46%** Children <18yrs in Single Parent Homes in 2013<sup>16</sup>

**22%**

% youth (0-18yrs) living in areas of concentrated poverty (2009-2013)<sup>13</sup>

**28%** % youth in poverty (2011-2013)

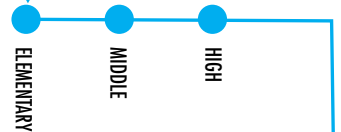
One Love Louisville's **EMPLOYMENT AND ECONOMIC DEVELOPMENT** goals and objectives seek to increase economic development and employment opportunities for youth and their families. Safe communities are created when employment opportunities and financial security are daily realities.



**7.3%** Unemployment Rate<sup>15</sup>

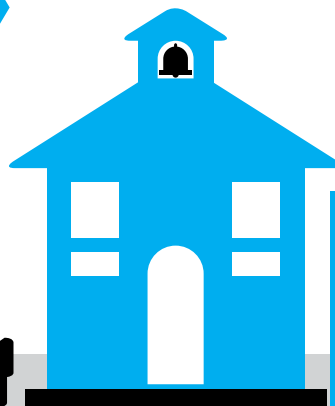
**4.0-5.9** Avg Grade Level

At the time of GED Enrollment (2013-2014)<sup>12</sup>



**EDUCATION**

One Love Louisville's **EDUCATION** goals and objectives seek to enhance the system of learning in order to increase opportunities for youth which decreases the chances of youth becoming victims and/or perpetrators of violence. When communities have high percentages of education attainment, violence has been seen to reduce.



**1,636** GED Graduates

2013-2015 GED Attainment within Jefferson County Public Schools (16-24yrs)<sup>11</sup>

**4,221/yr avg.** Out of School Suspensions<sup>9</sup>



**94.3%** Attendance Rates<sup>8</sup>

**51.9%** Kindergarten Readiness<sup>7</sup>

**77.75%** High School Graduation Rate (2013-2014)<sup>10</sup>



# GOALS, OBJECTIVES, & ACTIVITIES

One Love Louisville Youth Edition highlights five goals that target three police divisions in Louisville: Divisions 1, 2, and 4; these areas are heavily impacted by the factors listed in the previous section. The OSHN's approach to preventing youth violence is not separate to the approach for preventing overall community violence and thus Table # on page ## illustrates the relationship of our community violence prevention goals with that of our youth violence prevention goals.

Our goals and objectives aim to reduce youth violence by focusing on areas that impact the lives of our youth systemically. For Louisville youth, these areas are:

1. Community Building,
2. Education,
3. Employment and Economic Development,
4. Health and Social Wellness
5. Juvenile and Criminal Justice.

The OSHN utilize the **PIER** tactical approach to address youth violence and thus the goals and objectives are balanced and coordinated across multiple levels of engagement:

**P**REVENTION   **I**NTERVENTION   **E**NFORCEMENT   **R**E-ENTRY

As work is accomplished to implement the five goals outlined in this section, all assets and principles will be utilized to further reach the vision for Louisville Youth!



# YOUTH EDITION GOALS

Create and promote opportunities for civic engagement

Improve conditions that hinder education attainment

Support economic growth with a focus on the most economically challenged neighborhoods

Enhance the quality of intervention with individuals and families at the first sign of risk

Promote a restorative justice community



Louisville youth have the strength of character to achieve their goals.

# GOALS, OBJECTIVES, & ACTIVITIES

## COMMUNITY BUILDING

### GOAL 1: Create and promote opportunities for civic engagement (P)

**OBJECTIVE 1:** Increase the number of out of school time programs that utilize the standards and models developed by the Out-Of-School Time (OST) Coordinating Council

#### PERFORMANCE MEASURES

- ▶ # of programs that utilize standards and models

#### CURRENT ACTIVITIES

- ▶ Quality OST Minimum Standards: develop standards that capture the practices that have been demonstrated through research to lead to quality programs.
- ▶ OST Coordinating Council: community partnership convened to create a coordinated system for the enhancement of out-of-school time youth services in Louisville.
- ▶ Office of Youth Development: works with community partners to develop a coordinated community-wide OST system for youth and youth programming.

#### NEW ACTIVITIES

- ▶ Quality OST Minimum Standards Training: youth workers will be trained on how to implement the standards in their curriculums and practices.

**OBJECTIVE 2:** Increase youth engagement in Louisville Metro Community Center programs and activities.

#### PERFORMANCE MEASURES

- ▶ % increase of participation
- ▶ % increase of community centers usage
- ▶ # of new participants
- ▶ % of funding allocated to marketing and recruitment

#### CURRENT ACTIVITIES

- ▶ Kids Café: free meals in the community centers for children 18 years of age and under in partnership with Dare to Care Food Bank.
- ▶ OST Programming: summer and spring break programming offered at free and low cost.
- ▶ Extended Summer Hours: Community Centers in target areas have extended hours and restructured programming to include older youth.

#### NEW ACTIVITIES

- ▶ Center Take Overs: provides youth 17 years of age and younger a space to play basketball, hang out with their friends, listen to music, and dance in a safe and secure environment.
- ▶ Brain Chase-Summer Learning Challenge: youth have the opportunity to enroll in online summer learning software that focuses on summer learning loss and melt.
- ▶ Get Connected 96714: text message platform that allows residents to locate youth programs and activities near them.

**OBJECTIVE 3:** Increase the number of youth participating in leadership opportunities from targeted LMPD divisions

**PERFORMANCE MEASURES**

- ▶ # of youth leadership opportunities
- ▶ # of youth participating in leadership opportunities

**CURRENT ACTIVITIES**

- ▶ Healing Future Fellowship: brings together youth from all areas of Louisville to work together to explore differing views of race, class, culture, gender and equity as lenses from understanding and identifying solutions to prevention of injury and violence as a public health issue.
- ▶ Chief's Youth Advisory Board: brings youth from all areas of Louisville to address issues that directly affect Louisville youth and to build positive relationships between the police and youth.

**NEW ACTIVITIES**

- ▶ One Love Louisville Youth Implementation Team: will bring together youth from throughout Louisville to assist with the implementation of city-wide youth violence prevention strategies.

**OBJECTIVE 4:** Increase the number positive outcomes for young Black men and boys

**PERFORMANCE MEASURES**

- ▶ # of activities offered
- ▶ # of programs and initiatives focused on Black men and boys

**CURRENT ACTIVITIES**

- ▶ Louisville Cities United Collaborative: partnership between Mayor's Office, African American Faith Community, the Louisville Urban League, and community members which stemmed from National Cities United led by mayors and other city leaders to eliminate violence related to eliminate violence-related deaths of African-American males.
- ▶ Dirt Bowl: annual, six week, summer basketball tournament in the Shawnee neighborhood that brings families together over a friendly basketball tournament.
- ▶ Street Academy: OST program for African-American boys in 4th-6th grade that focuses on academic, social and cultural well-being.

**NEW ACTIVITIES**

- ▶ My Brother's Keeper Community Challenge: national challenge issued by President Obama that was accepted by Mayor Fischer in September 2014.
- ▶ Zones of Hope Initiative: place based strategy focused on five neighborhoods that aims to restore a sense of place and connection for some of Louisville have most "disconnected" neighborhoods, families, and young Black men and boys.
- ▶ Coding at the Beech: offers computer programming training to high school aged boys in one of Louisville's most "disconnected" neighborhoods.
- ▶ Jefferson County Public Schools Boys of Color Resolution: pledge to insure that efforts better serve boys of color through pre-K to graduation.

# GOALS, OBJECTIVES, & ACTIVITIES

## EDUCATION

### GOAL 2: Improve conditions that hinder education attainment (P)

**OBJECTIVE 1:** Increase Jefferson County Public School's (JCPS) Four-Year Adjusted Cohort Graduation Rate

#### PERFORMANCE MEASURES

- ▶ % increase of graduation rate
- ▶ # of students from target locations graduating

#### CURRENT ACTIVITIES

- ▶ Louisville Education and Employment Partnership (LEEP): career planners provide college and career readiness training for transition to post-secondary education, employment or military to high school aged youth.
- ▶ Metro Parks Community Centers designated as JCPS Learning Places: provides Success Maker/Study Island, online educational software to all school aged youth.
- ▶ Early Childhood Education Awareness: partnership with JCPS that provides childcare centers and parents with tools needed to begin school.

#### NEW ACTIVITIES

- ▶ Big Mama and Big Papa Network: mentorship program to link new/current parents and guardians with "seasoned" parents and guardians.
- ▶ Parenting Experience Forums: series of community based meetings with varying topics where parents/guardians receive a parental engagement toolkit of tips, resources and school district calendar.

**OBJECTIVE 2:** Increase the number of college degrees attained by 2020

#### PERFORMANCE MEASURES

- ▶ % increase of college degrees
- ▶ # of college readiness opportunities offered

#### CURRENT ACTIVITIES

- ▶ Degrees at Work: increase the number of working adults who complete college degrees.
- ▶ Metropolitan College: partnership between University of Louisville, Jefferson Community and Technical College and Universal Postal Service that offers free tuition for night shift employment.
- ▶ College Scholarships: Louisville Metro Government provides scholarships for community members pursuing 2 and 4 year degrees.
- ▶ 55,000/15,000 Degrees Initiative: commitment to increase the number of college degrees attained by Louisville residents which has a percentage focused on Black and Latino/Latina populations.

#### NEW ACTIVITIES

- ▶ College and Career Corners: create college going cultures in all 12 Metro Community Centers.

# GOALS, OBJECTIVES, & ACTIVITIES

## EMPLOYMENT & ECONOMIC DEVELOPMENT

### GOAL 3: Support economic growth with a focus on the most economically challenged neighborhoods (R & P)

**OBJECTIVE 1:** Increase the youth employment rate in Louisville

#### PERFORMANCE MEASURES

- ▶ % increase of youth employment rate
- ▶ # of youth employed

#### CURRENT ACTIVITIES

- ▶ Mayor's Summer Works Program: works with local businesses to provide summer jobs and skill learning opportunities for youth 16 to 21 years of age.
- ▶ Kentucky Youth Career Center: offers youth 16 to 21 years of age 1:1 case management, career planning, financial assistance, and resume building activities.

#### NEW ACTIVITIES

- ▶ Entrepreneur Forum: 3 part series to encourage entrepreneurship in economically challenged communities.
- ▶ KentuckianaWorks Manufacturing Center: connects young adults to manufacturing trainings and employment opportunities.

**OBJECTIVE 2:** Increase strategies to connect job seekers to entry level opportunities and entry level opportunities to job seekers

#### PERFORMANCE MEASURES

- ▶ # of strategies implemented
- ▶ % increase of employment rate
- ▶ # of entry level trainings

#### CURRENT ACTIVITIES

- ▶ We Hire Together: identifies a network of on-the-ground West Louisville community connectors to inform West Louisville residents about hiring opportunities and connect them to existing workforce development and other employment resources.
- ▶ Mayor's Youth Opportunity Showcase: annual job fair for youth and young adults' ages 16 to 21 years of age.

#### NEW ACTIVITIES

- ▶ Code Louisville: after school program for youth 18 years of age and under who reside in Louisville's Russell neighborhood. Youth learn computer programming and are paired with mentors who are technology professionals.
- ▶ College to Career Internship Program: connects local rising junior and senior college students with area companies that offer paid internships.
- ▶ Civil Service Institute: provide skills and knowledge applicable to civil service professions, i.e. police officer, fire fighter, emergency medical technician, paramedics and corrections officers.
- ▶ Environmental and Property Rehabilitation Job Promotion: promote entry level jobs that have potential advancement into skilled trades and self-employment.

# GOALS, OBJECTIVES, & ACTIVITIES

## HEALTH & SOCIAL WELLNESS

### GOAL 4: Enhance the quality of intervention with individuals and families at the first sign of risk (I & P)

**OBJECTIVE 1:** Decrease the number of youth using illegal substances throughout Louisville Metro

#### PERFORMANCE MEASURES

- ▶ % decrease of youth reporting drug use
- ▶ % decrease of youth hospitalized for drug related incidents
- ▶ % decrease of youth drug overdoses
- ▶ % decrease of youth drug/narcotic violations

#### CURRENT ACTIVITIES

- ▶ PAL Coalition: youth-led group that works to reduce underage drinking and highlight the risks of using drugs and tobacco.
- ▶ Metro Substance Abuse Work Group: diverse group of professionals and substance abuse advocates who work to implement city-wide, comprehensive, substance abuse prevention strategies.

#### NEW ACTIVITIES

- ▶ Harm Reduction Toolkit: organizes harm reduction strategies, treatment and recovery supports and referral practices to be disseminated to community at large.

**OBJECTIVE 2:** Increase the number of youth service providers trained in Suicide Prevention

#### PERFORMANCE MEASURES

- ▶ # of youth service providers trained in QPR
- ▶ # of youth service providers who report utilizing QPR learned skills
- ▶ % decrease of youth suicide
- ▶ % increase of youth seeking assistance

#### CURRENT ACTIVITIES

- ▶ Metro Suicide Prevention Work Group: diverse group of professionals and suicide prevention advocates who work to create a city-wide suicide prevention policy.
- ▶ Jefferson County Public Schools Yearly Suicide Prevention: all school district employees and students.

#### NEW ACTIVITIES

- ▶ Question Persuade Refer(QPR)-Suicide Prevention-Training: provides training offered free to the public several times throughout the month that provides the signs and risk factors for suicide as well as tips on what to do if encountered
- ▶ Suicide Prevention Awareness Campaign: will align local efforts with the National Suicide Prevention week to increase awareness of prevention resources and reduce mental health stigma.

**OBJECTIVE 3:** Increase the number of youth connected to an adult through 1:1 mentoring

**PERFORMANCE MEASURES**

- ▶ # of youth enrolled in mentoring programs
- ▶ % decrease of youth awaiting mentor
- ▶ % increase of funding received by mentoring agencies

**CURRENT ACTIVITIES**

- ▶ Kentucky Youth Career Center’s Right Turn Program: pairs volunteer adult mentors with court-involved youth, ages 16 to 19, to help guide them in setting and meeting personal and career goals.

**NEW ACTIVITIES**

- ▶ Be the One Mentor Fair: allow residents to learn about the mentoring opportunities throughout the city, pairs prospective mentors with mentor programs.
- ▶ Metro Mentor Policy: allows employees two hours of paid time a week to work with disconnected youth and help them develop the skills, confidence and personal vision to make the right choices in their lives.
- ▶ Be the One Mentor Challenge: encourage all citizens to “Be The One” to make a difference in a young person’s life by signing up to be a mentor with one of the mentoring agencies.
- ▶ Mentoring Matters Community Discussion: creates space for individuals to discuss how mentoring has or could have made a difference in their lives; brings together representatives from several mentoring agencies, current and prospective mentors and mentees.

**OBJECTIVE 4:** Increase the number of prevention and intervention activities for youth exposed to violence

**PERFORMANCE MEASURES**

- ▶ # of prevention strategies implemented
- ▶ # of intervention strategies implemented
- ▶ % increase of funding opportunities allocated to strategies
- ▶ # of youth utilizing services/programs

**CURRENT ACTIVITIES**

- ▶ Children Exposed to Violence Collective Impact Initiative: focuses on creating a comprehensive, community-wide response to children’s exposure to violence.
- ▶ Louisville Coalition for Youth: addresses adverse childhood experiences (ACEs) focused on implementing a trauma resiliency model for the Jefferson County Public School system.
- ▶ Coalition Supporting Young Adults: works and listens to young adults in crisis who are disconnected from opportunities needed to succeed.
- ▶ Kentucky Crisis Response Team: provides communities emotional and social support following exposure to violent events that has an impact on the broader community.

**NEW ACTIVITIES**

- ▶ Faith based violence reduction system: will connect houses of faith, create a comprehensive database of entities within the faith community
- ▶ PIVOT: provides immediate resources to non-fatal individuals who enter the hospital due to a shooting, aggravated assault.
- ▶ Louisville Metro Police Department, Jefferson County Public Schools and Mayor’s Office Partnership: creates a communication process between three agencies in order to reduce the adverse effects of school going youth who recently experienced or were exposed to violence (within the last week, approximately).

# GOALS, OBJECTIVES, & ACTIVITIES

## JUVENILE & CRIMINAL JUSTICE

### GOAL 5: Restore youth who have gone down the wrong path (R & I)

**OBJECTIVE 1:** Decrease the number of young people charged with a crime

#### PERFORMANCE MEASURES

- ▶ % decrease of youth arrests
- ▶ % decrease housed at Youth Detention Center
- ▶ # of youth active with restorative justice policies and activities

#### CURRENT ACTIVITIES

- ▶ Juvenile Detention Alternative Initiative: supports the Annie E. Casey Foundation's vision that all youth involved in the juvenile justice system have the opportunity to develop into healthy and productive adults.
- ▶ Evening Reporting Center (ERC): offers an opportunity for pre-adjudicated males and their families to engage in comprehensive, wrap around programming in an effort to reduce and/or eliminate the likelihood of re-offending.
- ▶ Restorative Justice Louisville: provides an alternative to the criminal justice system and punishment system within the schools through working with policymakers, victims and perpetrators.

#### NEW ACTIVITIES

- ▶ Youth Chats with Louisville Metro Police Department: series of public open-dialogue discussions, designed so that youth and young adults 25 and under can hear from - and talk with - local law enforcement officials to establish better relationships and mutual understanding.
- ▶ Human Relations Commission Community Forums: works to bring information on the workings and processes of the justice system.
- ▶ Restorative Justice Circles in Jefferson County Public Schools' Alternative Schools: students learn to identify how their behaviors affect others and their community.

**OBJECTIVE 2:** Increase opportunities to implement evidence based practices to improve identified outcomes for returning citizens

#### PERFORMANCE MEASURES

- ▶ % decrease of recidivism
- ▶ # of returning citizens utilizing services
- ▶ # of returning citizens who receive employment

#### CURRENT ACTIVITIES

- ▶ Louisville Metro Re-Entry Task Force: coordinates services provided to residents returning from incarceration.
- ▶ Fatherhood Programming at Metro Corrections: helps individuals experiencing or at risk of family dissonance resulting from the individual's physical and/or emotional separation.

#### NEW ACTIVITIES

- ▶ "One Stop" Re -Entry Service Centers: will provide resources and services to individuals returning from incarceration in order to increase re-integration into the community and decrease recidivism.



# ONE LOVE LOUISVILLE & ROLE OF POLICY

In order to create long lasting results, our community and efforts must pay special attention to organizational, local, and state level policy that supports our work of creating better outcomes for all of our youth and young adults. To support efforts, The OSHN has strategically placed itself to help influence and utilize policies and funding streams such as the following:

## JCPS STUDENT CODE OF CONDUCT REVISIONS

JCPS's Student Code of Conduct had revisions approved by the school board during the summer of 2014 to create a more restorative and less punitive behavior modification system. The revisions also provided a more consistent measure for how all teachers, administrators and schools throughout JCPS handled punishing students for misbehavior. All assistant principals and student resource officers have been trained on how to utilize and implement the new Code of Conduct. One of the specific additions following the revisions is the restorative justice circles in schools.

## MINIMUM WAGE INCREASE

The minimum wage increase (Ordinance No. 046, Series 2014) was passed by Louisville Metro Council in December 2014; it will rise from \$7.25/hr. to \$9.00/ hr. over a course of 3 years.

## METRO MENTORS

Metro Mentors is a new policy instituted by Mayor Fischer that allows Louisville Metro Government employees the opportunity of 2 hours of paid time a week to mentor a youth in the community. The intent is to increase the number of youth who are connected to a caring adult by starting with metro employees. This policy is included in the Louisville Metro Government Personnel Policies, in section 1.21 (1).

## WORKFORCE INNOVATION & OPPORTUNITY ACT

The Workforce Innovation and Opportunity Act was signed into law by President Obama in July 2014 and has allowed the Louisville Mayor's Summer Works program to increase funding and the age of individuals served.

## BODY CAMERAS

Louisville Metro Police Department will pilot body cameras in the 5th Division and then to all sworn officers following the successful pilot.

## BAN THE BOX

Ban the Box (Ordinance No. 216, Series 2014) was passed by Louisville Metro Council in March 2014 which banned the box that asks employment applicants to check if they have any felony convictions. This ordinance prohibits city agencies from inquiring into an applicant's conviction history until after the applicant has been found "otherwise qualified". The ordinance also states that the City prefers to do business with vendors who have adopted policies that are consistent with the City, and that consideration of vendors' criminal history will be a part of the performance criteria used when the City is awarding contracts.

## BLACK MALE INNOVATION FUND

Metro United Way is committed to a goal of uncovering promising practices in our community that change the odds for African American boys and young men, and established a Black Male Innovation Fund to that end. The fund will invest in Early Education and Out-of-School time programs that deliver results for African American males.

Where there is no direct ability to implement or influence policy, policy is used to guide and inform the work, such as the case with Kentucky’s Senate Bill 2015, Kentucky’s House Bill 70 and Kentucky’s Senate Bill 97. Senate Bill 200 seeks to reduce the number of youth who are sent to out-of-home detention for misdemeanors and low-level offenders. House Bill 70 seeks to allow an individual convicted of certain felons the right to vote after the expiration of probation, parole or their maximum sentence. Senate Bill 97 increases the age of legal school dropout from 16 years of age to 18 years of age.

## FUNDING

Funding allocation, such as policy influencing and awareness, plays a large role in our efforts to enhance and increase positive outcomes for all children. We have been able to reallocate general funds as a direct result of our work in the following areas:

- ▶ \$800, 000 to community centers
- ▶ \$100, 000 to restorative justice practices
- ▶ \$1.5 million to community center upgrades



# IMPLEMENTATION PROCESS & GOVERNING STRUCTURE

The One Love Louisville-Youth Edition goals and supporting objectives will be governed following the structure illustrated in Figure #1 (pg 27). Under the leadership of Mayor Greg Fischer and Chief of Community Building, the OSHN and the One Love Louisville Youth Implementation Team (YIT) will lead this effort by leveraging its convening power, dedicated staff and resources. The OSHN is currently staffed, full-time with a Director and Program Coordinator and has two unpaid internship opportunities. The OSHN's Director works to: bridge the work of violence prevention and response across 37 Metro departments and affiliated agencies; convenes the Advisory Committee; oversees the development of baselines; identifies gaps (and redundancies) in services;

identifies best practices; cultivates key partnerships; identifies community and youth leaders; and oversees the communication strategy to accompany its release. The responsibilities of the Program Coordinator consists of researching strategies and programs; conducting staff and community trainings; tracking reports; overseeing communications (on-line and written); facilitating community and governance structure meetings; developing and maintaining a data collection system to monitor, evaluate and report goal and objective progress. The two floating interns assist with policy research, communications and other administration tasks. OSHN also works with the other following groups, teams and systems to implement all goals and objectives as illustrated in Figure #1 (pg 27):

**ADVISORY COUNCIL** provides oversight and policy guidance; they are accountable for helping to move the work forward. Mayor Fischer leads the committee, which consists of key leaders of public agencies, community and faith-based organizations, business leaders and community members. The committee meets quarterly to assess the implementation progress, receive updated assessments, review committee reports and provide strategic direction to the Implementation Team.

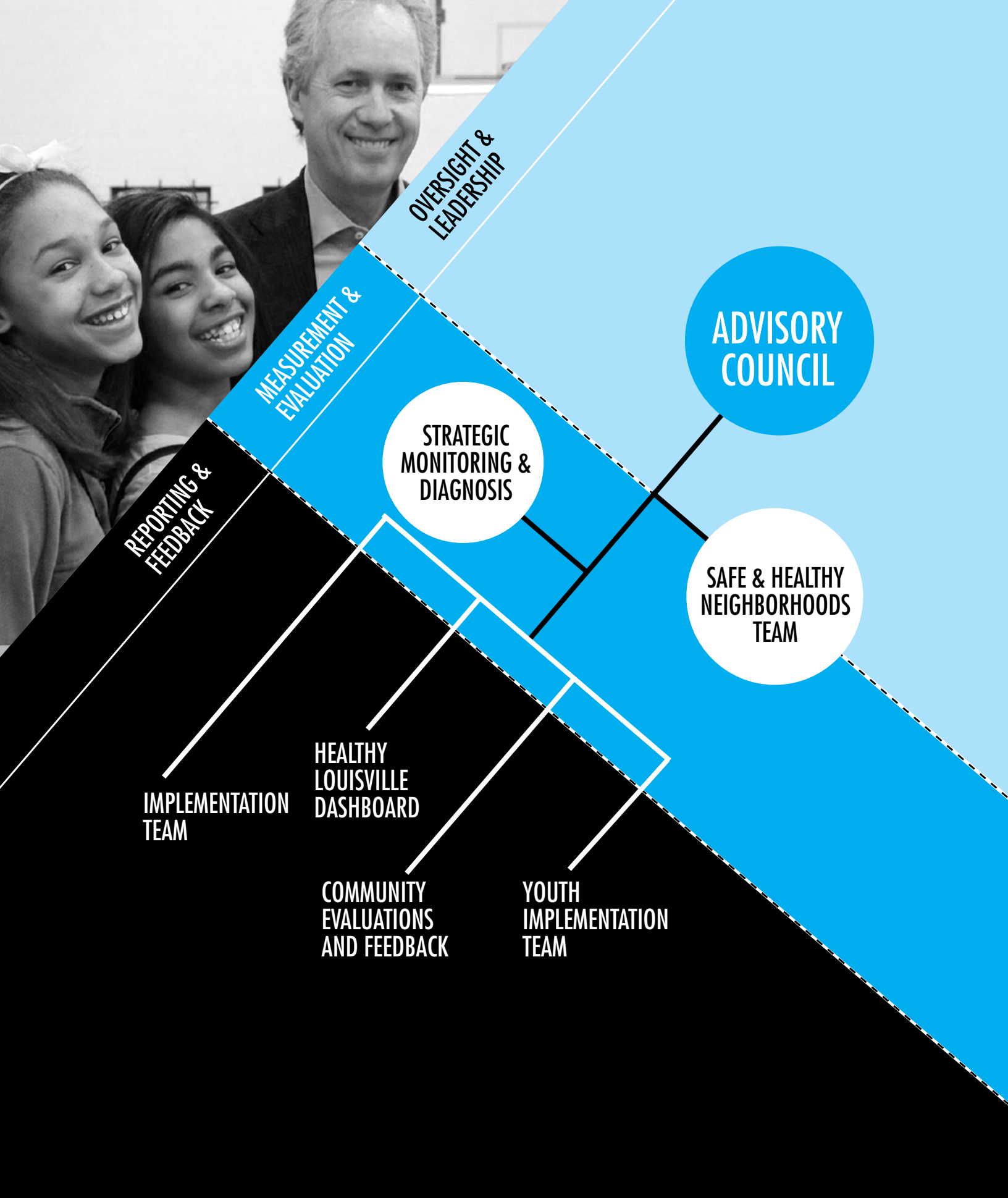
**STRATEGIC MONITORING AND DIAGNOSIS** provides measurement and evaluation support and oversight to ensure that performance measurements and key performance indicators are developed and are continuously tracked. This committee meets quarterly to assess measurement progress.

**IMPLEMENTATION TEAM** provides monthly critique and feedback on goals, objectives and initiative progress related to the One Love Louisville action plan. This committee consists of 13 dedicated community members who are able to hold initiative leads accountable for their progress. There meetings are open to the public on every third Friday of the month from 9:00-10:30am.

**HEALTHY LOUISVILLE DASHBOARD** this online tool provides the space for all residents to monitor the goal progress at their own leisure. The dashboard can be located at [www.healthylouisvillemetro.org](http://www.healthylouisvillemetro.org).

**COMMUNITY EVALUATIONS AND FEEDBACK** all residents have the opportunity to provide feedback and evaluation on the work of the OSHN on their website homepage located at [www.louisvilleky.gov/safeneighborhoods](http://www.louisvilleky.gov/safeneighborhoods). This is an important way for all ideas, critiques and praises to be sent to the Safe and Healthy Neighborhoods team.

**YOUTH IMPLEMENTATION TEAM** serves as youth advisors to the OSHN Team and its partners; members meet monthly to provide feedback, suggestions and critiques of goal progress related to One Love Louisville-Youth Edition. This committee consists of 31 youth and young adults between the ages of 13 and 23 years of age from various parts of the city.



	YOUTH EDITION	MBK MILESTONES	COMMUNITY PLAN
<b>COMMUNITY BUILDING</b>	Create and promote opportunities for civic engagement	Milestone 1: All children enter school cognitively, physically, socially and emotionally prepared	<p>Goal 1: See high levels of civic participation reflected evenly throughout Louisville Metro</p> <p>Goal 2: Map the leadership landscape in Louisville Metro in order to identify community connectors, pinpoint gaps in services and create better marketing of existing leadership development opportunities</p> <p>Goal 3: Increase community engagement and awareness of violence prevention efforts throughout Louisville Metro</p> <p>Goal 4: Create a faith-based violence reduction system in Louisville Metro</p> <p>Goal 5: Assess current community programs to identify effective strategies and gaps in services to increase effective programs</p>
<b>EDUCATION</b>	Improve conditions that hinder education attainment	<p>Milestone 2: All children read at grade level by third grade</p> <p>Milestone 3: All young people graduate from high school</p> <p>Milestone 4: All young people complete post-secondary education or training</p>	<p>Goal 6: Provide resources and tools for parents and guardians to help their children succeed academically, socially and emotionally</p>
<b>EMPLOYMENT &amp; ECONOMIC DEVELOPMENT</b>	Support economic growth with a focus on the most economically challenged neighborhoods	Milestone 5: All youth out of school are employed	<p>Goal 7: Build an infrastructure to promote business connections</p> <p>Goal 8: Develop strategies to connect job seekers to entry level opportunities and entry level opportunities to job seekers</p>
<b>HEALTH &amp; SOCIAL WELLNESS</b>	Enhance the quality of intervention with individuals and families at the first sign of risk	(Milestone 1)	<p>Goal 10: Decrease the number of overdoses throughout Louisville Metro by 10% by December 2016</p> <p>Goal 9: Adopt, support and promote a Louisville Metro wide strategy for suicide prevention</p> <p>Goal 11: Decrease the number of youth using illegal substances throughout Louisville Metro by 2% by December 2016</p>
<b>JUVENILE &amp; CRIMINAL JUSTICE</b>	Restore youth who have gone down the wrong path	Milestone 6: All young people are safe from violent crime	<p>Goal 12: Assist in creating a climate in which residents, LMPD and LMPD officers have a more favorable relationship that includes increased trust and positive perceptions of one another through the promotion of legitimate, transparent and just exercising of LMPD officers' (discretionary) power during citizen-officer encounters</p> <p>Goal 13: Identify opportunities for three partnerships to implement evidence based practices to improve identified outcomes for at risk youth and returning citizens by December 2016</p>

**PROGRESS-TO-DATE**  
OCT 2014-OCT 2015

YEAR	MONTH	ITEM
2014	OCTOBER	<ul style="list-style-type: none"> <li>Selected into the National Forum on Youth Violence Prevention</li> <li>Began Zones of Hope Monthly Conversations</li> </ul>
	NOVEMBER	<ul style="list-style-type: none"> <li>Hosted the 4th Annual Rumble Young Man Rumble Gathering</li> </ul>
	DECEMBER	<ul style="list-style-type: none"> <li>Selected into the American Institutes of Research's Youth Violence Prevention Training and Technical Assistance</li> </ul>
2015	JANUARY	<ul style="list-style-type: none"> <li>One Love Louisville Community Plan released</li> <li>Created the One Love Louisville Implementation Team</li> <li>Implemented the Be the 1 Mentor Challenge</li> <li>Hosted Right Turn Annual Meeting w/Institute for Educational Leadership</li> <li>Mayor Fischer launched the Cradle to Career Initiative</li> <li>Healing Possible Quorum issues recommended solutions to racial inequality in Louisville</li> </ul>
	FEBRUARY	<ul style="list-style-type: none"> <li>Attended My Brother's Keeper convening in Washington, DC</li> <li>Mayor's Opportunity Youth Showcase</li> </ul>
	MARCH	<ul style="list-style-type: none"> <li>Participated in Youth Violence Prevention Week</li> <li>Began 1LoveLou Monthly Newsletter</li> <li>Hosted Community Center Takeovers for youth 12-17yrs of age</li> <li>Hosted site visit on National Forum on Youth Violence Prevention</li> </ul>
	APRIL	<ul style="list-style-type: none"> <li>Created One Love Louisville Youth Implementation Team</li> <li>Coding at the Beech Graduation</li> <li>Jefferson County Public Schools(JCPS) Boys of Color Celebration</li> <li>JCPS Released New Kindergarten Readiness Website</li> <li>Attended Communities Collaborating to Reconnect Youth's Annual Meeting in Washington, D.C.</li> <li>Attended American Institutes of Research's Youth Violence Prevention Training and Technical Assistance Meeting in Houston, TX</li> </ul>
	MAY	<ul style="list-style-type: none"> <li>Attended National Forum on Youth Violence Prevention Summit in Washington, D.C.</li> </ul>
	JUNE	<ul style="list-style-type: none"> <li>Mayor's 2015 SummerWorks Kick-Off</li> <li>Partnered with Louisville Free Public Library to hosts 15 community events aimed at spreading awareness, engagement and support of Youth Violence Prevention activities</li> </ul>
	JULY	<ul style="list-style-type: none"> <li>Released My Brother's Keeper Louisville Action Plan</li> <li>Attended 21st Century Policing Forum at the White House</li> <li>Formed Beech Technology's</li> </ul>

# Youth Plan Timeline Cont.

YEAR	MONTH	ITEM
2015	AUGUST	<ul style="list-style-type: none"> <li>• Reissued Kindergarten Readiness Challenge</li> <li>• Kindergarten Kickoff Celebration</li> <li>• Hosted American Institutes of Research site visit</li> <li>• Introduced One Love Louisville Youth Implementation Team Members to Louisville community</li> </ul>
	SEPTEMBER	<ul style="list-style-type: none"> <li>• Safe and Healthy Neighborhoods began serving as an employer site for the Kentucky Youth Career Center's Internship Academy</li> <li>• Hosted My Brother's Keeper Roundtable in partnership with the Department of Education</li> <li>• Hosted Day of Hope to celebrated 1 year anniversary of Zones of Hope Initiative in partnership with Casey Family Programs</li> <li>• Hosted site visit with Long Beach, CA's National Forum on Youth Violence Prevention team</li> <li>• Attended National League of Cities' Municipal Leadership for Juvenile Justice Reform Leadership Academy</li> <li>• University of Louisville's School of Public Health and Information Sciences received Center for Disease Control funded grant to create a youth violence prevention center</li> </ul>
	OCTOBER	<ul style="list-style-type: none"> <li>• Hosted One Love Louisville Data Summit</li> <li>• Released the One Love Louisville Youth Edition Action Plan</li> <li>• Coalition Serving Young Adults and Office for Safe and Healthy Neighborhoods Host Local Reengagement Convening</li> </ul>
NOVEMBER		
<b>PROJECTED CALENDAR</b> NOV 2015-JAN 2017		<b>MONTHLY ACTIVITIES:</b> <ul style="list-style-type: none"> <li>• One Love Louisville Progress Reports and Implementation Meetings</li> <li>• One Love Louisville Youth Implementation Team Meetings</li> <li>• Youth Dinner with Mayor Fischer</li> <li>• LMPD Youth Chats</li> <li>• Zones of Hope Neighborhood Meetings</li> </ul>
	DECEMBER	<ul style="list-style-type: none"> <li>• Policy Review</li> </ul>
2016	JANUARY	<ul style="list-style-type: none"> <li>• One Love Louisville Annual Progress Report</li> </ul>
	FEBRUARY	<ul style="list-style-type: none"> <li>• Mayor's Opportunity Youth Showcase</li> <li>• Coalition Serving Young Adults and Office for Safe and Healthy Neighborhoods Host Local Reengagement Convening</li> </ul>
	MARCH	
	APRIL	
	MAY	
	JUNE	<ul style="list-style-type: none"> <li>• Mayor's 2016 SummerWorks Kick-Off</li> </ul>

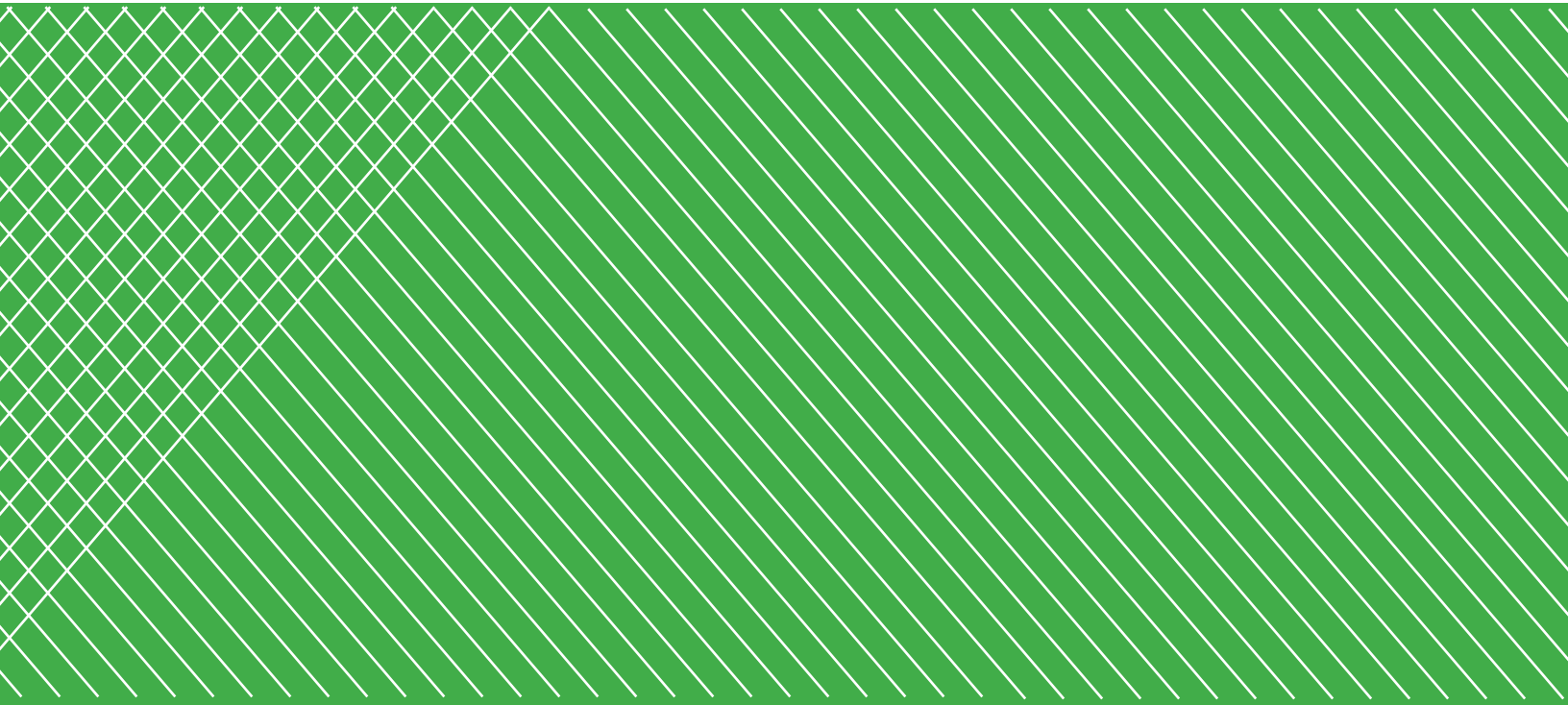
# Youth Plan Timeline Cont.

YEAR	MONTH	ITEM
2016	JULY	
	AUGUST	
	SEPTEMBER	<ul style="list-style-type: none"><li>• Zones of Hope 2 Year Anniversary Celebration</li></ul>
	OCTOBER	
	NOVEMBER	
	DECEMBER	
2017	JANUARY	<ul style="list-style-type: none"><li>• One Love Louisville Annual Progress Report</li></ul>





# APPENDIX



# Contents

**APPENDIX A: Office for Safe and Healthy Neighborhoods Historical Timeline**

**APPENDIX B: Advisory Council & Partner Lists**

**APPENDIX C: Snapshot of Louisville Youth References**

# APPENDIX A: HISTORICAL TIMELINE

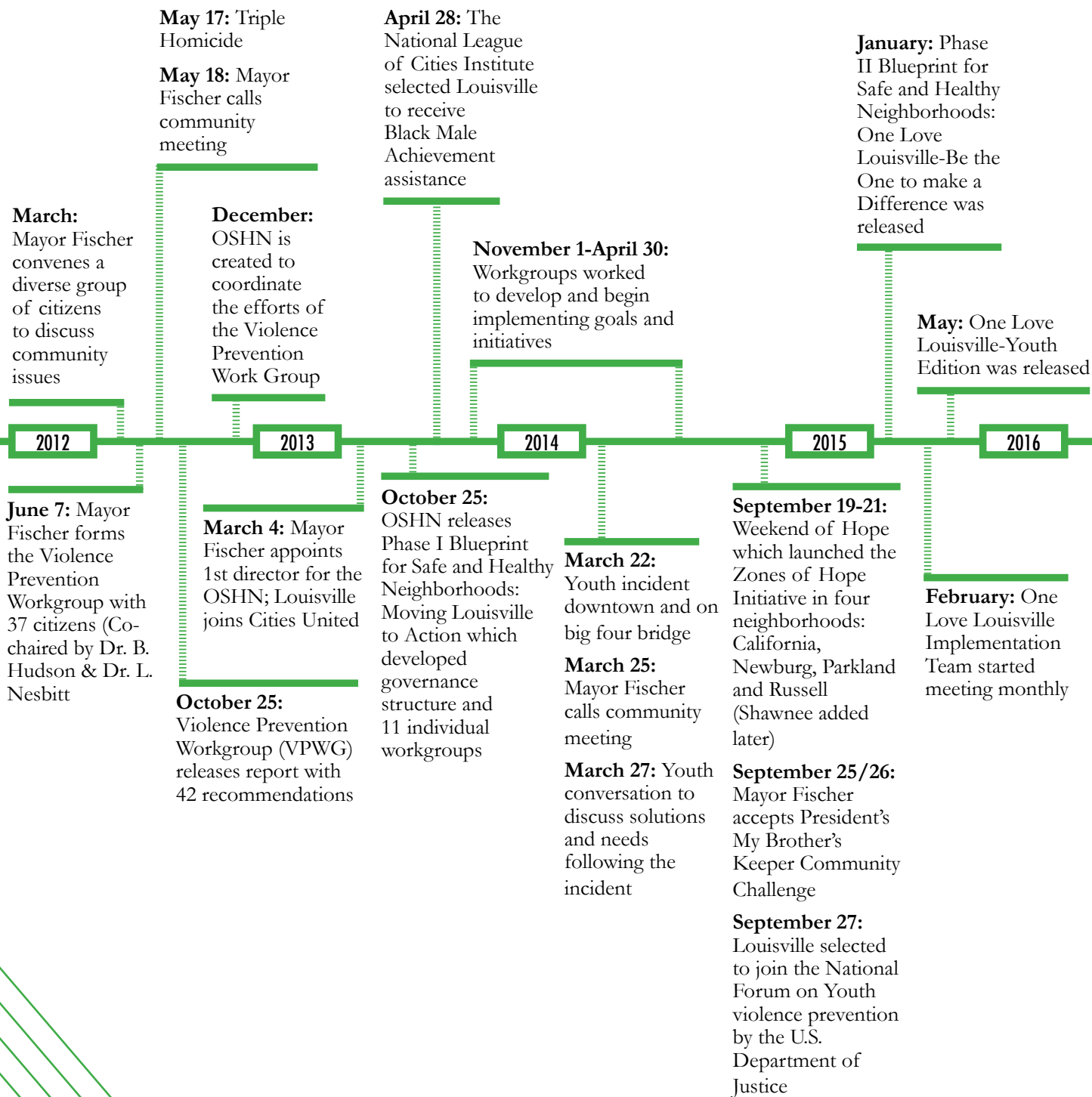


FIGURE #2: HISTORICAL TIMELINE

# Office of Safe and Healthy Neighborhoods 2012-2014 HIGHLIGHTS

## COMMUNITY BUILDING

Received a \$226,400 grant from the James Graham Brown Foundation for the “Zones of Hope” initiative which supports the Black Male Achievement initiative in Parkland, California, Russell, Shawnee and Newburg

Received \$40,000 from anonymous local foundation to provide conflict resolution training to community center staff, youth and families

Increased youth development funding by \$800,000 to support youth development which increased staff and program capacity

Mayor’s Faith Forum: used to engage the faith community in crisis response work.

Metro Mentors: new policy that allows every Metro employee two hours a week to mentor

Ten community work groups were convened to develop SMART goals and initiatives to combat violence

Received \$20,000 from Homeland Security to build capacity of Neighborhood Watches

## EDUCATION

JCPS created the Equity Scorecard and the Boys of Color Resolution

Participated in the revisions made to the JCPS Code of Conduct

College and Career Corners are under development at all Metro Community Centers

Created an intervention for children exposed to violence by convening partnership between LMPD, JCPS and Metro

LMPD secured Community Oriented Policing Services funding to deploy five additional School Resource Officer in JCPS & working with LMPD to ensure equity

Louisville Metro Free Public Library issued the 1,000 books before kindergarten challenge

## EMPLOYMENT & ECONOMIC

KentuckianaWorks SummerWorks expanded outreach efforts to targeted youth and employed a total of 2,180 youth

Received \$2.25 million for the Right Turn program to connect 500 youth (ages 16-19 years) to educational and employment opportunities and to an adult mentor

Louisville Metro Dept. of Public Health & Wellness employed 25 youth in the Healing Future Fellows program summer 2014

Metro Parks employed a total of 82 youth during summer of 2014

## HEALTH & WELLNESS

Kentucky Crisis Response Team has been deployed to connect community members impacted by homicide to resources that will assist in minimizing the impact of a traumatic event

Developed partnership between University Hospital, Health Department and Mayor’s Office to implement a hospitalbased intervention program for shooting and stabbing victims

Released the Healthy Louisville 2020 report which reinforces violence as a public health issue

Provided Psychological First Aid training to 60 community members

## JUVENILE & CRIMINAL JUSTICE

Expanded support for Restorative Justice Louisville by \$100,000

Received Right Turn grant for adult mentorship, juvenile record expungement and resources for youth involved in the criminal system

Convenes monthly meetings with incarcerated males ages 18 – 26 to discuss community problems and potential solutions

Staff was reassigned to oversee a pilot program for citizens returning from custody

LMPD created Real Time Crime Center

LMPD enhanced camera system, adding additional cameras

Received a \$300,000 Project Safe Neighborhood Grant for two years to address violent crime in the Parkland neighborhood

Youth Detention Services started an evening reporting center to provide more intensive supervision for at risk youth

Council passed resolution to support HB 70 (restoration of voters’ rights for xfelons) signed by Mayor Fischer

Partnership with Human Relations Commission and HR to work with Council on Ban the Box

# APPENDIX B: ADVISORY COUNCIL & PARTNERS

## ADVISORY COUNCIL

Lou Ann Atlas	Fifth Third Bank
Ruth Brinkley	KentuckyOne Health
J. Michael Brown	Kentucky Justice Cabinet
Chuck Denny	PNC Bank
Maggie Elder	Metro United Way
Angie Evans	Community Foundation of Louisville
Greg Fischer	Louisville Metro Government
Kevin Flanery	Churchill Downs
Darryl Griffith	Darryl Griffith Foundation
Donna Hargens	Jefferson Co. Public Schools
Hunt Helm	Bellarmine University
Gil Holland	Entrepreneur
Nat Irvin	University of Louisville
Vincent James	Elim Baptist Church
Jon Meyer	Jones, Nale & Mattingly
Marta Miranda	Center for Women and Families
Tom Noland	Humana
Mike O'Connell	Jefferson County Attorney's Office
Pam Darnall	Family & Children's Place
Mitchell Payne	University of Louisville
Diane Porter	Jefferson County School Board
Paul Perconti	West End School
Sadiqa Reynolds	Louisville Metro Government
Ben Richmond	Louisville Urban League
Barbara Sexton Smith	Fund for the Arts
Howard S. Marshall	FBI
Carla Wallace	Showing Up for Racial Justice
Steve Williams	Norton Healthcare
Tom Wine	Commonwealth Attorney
John E. Kuhn Jr.	U.S. Attorney's Office

## FUNDING PARTNERS

Casey Family Programs  
Humana Foundation  
James Graham Brown Foundation  
Metro United Way

## LOCAL ORGANIZATIONAL PARTNERS

2Not1  
Big Brothers Big Sisters  
Center for Women and Families  
Community Foundation of Louisville  
Elim Baptist Church  
Family & Children's Place  
Fifth Third Bank  
Interdenominational Ministerial Coalition  
Jefferson County Public Schools  
Jefferson County School Board  
Job Corps  
KentuckianaWorks  
Kentucky Cabinet for Health and Family Services'  
Department for Community Based Services  
Kentucky Jobs with Justice  
Kentucky Youth Advocates  
Kentucky Youth Career Center  
Legal Aid Society  
Life Institute  
Louisville Free Public Library  
Louisville Metro Corrections  
Louisville Metro Council  
Louisville Metro Department of Public Health and  
Wellness  
Louisville Metro Police Department  
Louisville Metro Youth Detention Center  
Louisville Urban League  
ManUp  
Metro United Way  
Muhammad Ali Institute  
Office of Public Health Practice & Community  
Outreach  
Pact in Action  
PAL Coalition  
Peace Education  
PNC Bank  
Seven Counties Services, Inc.  
Shawnee Youth Advocates  
St. George's Community Center  
U.S. Attorney's Office for the Western District  
University of Louisville  
University of Louisville School of Public Health and  
Information Sciences  
West End School  
YMCA Safe Place

## NATIONAL PARTNERS & NETWORKS

National Partners & Networks  
American Institutes for Research  
Campaign for Black Male Achievement  
Cities United  
National Forum on Youth Violence Prevention  
National League of Cities  
Open Society Foundation  
Prevention Institute

## APPENDIX C: SNAPSHOT OF LOUISVILLE YOUTH REFERENCES

- 1 Louisville Metro Police Department (LMPD) Crime Data Center; data subject to change based on investigative findings and subsequent reclassification of crimes
- 2 Louisville Metro Police Department (LMPD) Crime Data Center; data subject to change based on investigative findings and subsequent reclassification of crimes
- 3 Louisville Metro Police Department (LMPD) Crime Data Center; data subject to change based on investigative findings and subsequent reclassification of crimes
- 4 Louisville Metro Police Department (LMPD) Crime Data Center; data subject to change based on investigative findings and subsequent reclassification of crimes
- 5 Kentucky Cabinet for Health and Family Services' Child Abuse and Neglect Annual Report of Fatalities and Near Fatalities (September 2014)
- 6 Kentucky Community Crisis Response Board's Children Exposed to Violence Update Report; Only includes events in which police were on the scene and a child was present, victimized, acting out (non-physical assault) or assault by child (February 2015)
- 7 Jefferson County Public Schools' Brigance: Fall 2014 Results Readiness by Zip Code (January 26, 2015)
- 8 Jefferson County Public Schools' Data Books: <http://www.jefferson.kyschools.us/Departments/AcctResPlan/databook/index.html>
- 9 Jefferson County Public Schools' Data Books: <http://www.jefferson.kyschools.us/Departments/AcctResPlan/databook/index.html>
- 10 Jefferson County Public Schools' Data Books: <http://www.jefferson.kyschools.us/Departments/AcctResPlan/databook/index.html>
- 11 Retrieved from: <http://kyae.ky.gov/students/ged.htm>
- 12 Retrieved from: <http://kyae.ky.gov/students/ged.htm>
- 13 Population Reference Bureau analysis of data from the U.S. Census Bureau, 2000 Decennial Census Summary File 1 and Summary File 3 and the 2009–2013 American Community Survey 5-year data.
- 14 Data Source: IC Common Data Project 10/29/2014
- 15 U.S. Department of Labor Bureau of Labor Statistics
- 16 Population Reference Bureau, analysis of data from the U.S. Census Bureau, Census 2000 Supplementary Survey, 2001 Supplementary Survey and 2002 through 2013 American Community Survey (ACS).
- 17 Retrieved from: <http://elect.ky.gov/statistics/Pages/turnoutstatistics.aspx>
- 18 Based on openings within Big Brother Big Sisters of Kentuckaiana, Kentucky Youth Career Center and JCPS' Every 1 Reads

